



AMUSEMENT ON *Water*

A N E W D E S T I N A T I O N B Y A M E R G R O U P

Porto Golf
in the heart of NEW Alamein



Kilo 106 in front of
Alamein Gate



porto golf

Alamein City





A Signature of **Excellence**

Step into a world of fun-filled adventure at Porto Cruise, a festive destination that promises excitement for the entire family. Set amidst a Caribbean-inspired tropical landscape in the heart of Alamein City and overlooking the iconic Alamein Towers, Porto Cruise is the world's first residential project shaped like a massive ship. Enjoy various facilities onboard.





The Cruise Life

Welcome to Porto Cruise in New Alamein City, a groundbreaking residential development designed to capture the essence of life on a luxurious cruise ship. Surrounded by serene water features, this project combines the best of nautical living with the comfort of a modern, well-equipped Caribbean home. Porto Cruise offers an unparalleled lifestyle with extensive family and kids' facilities, ensuring every resident enjoys a unique blend of relaxation, adventure, and entertainment.



DISCLAIMER
The information contained in this promotional material is for illustration purposes only and is subject to change. Statements, figures, calculations, plans, images and representations are indicative only.
Images may include sketches, artist impressions and computer-generated images.
Changes may be made during the further planning or development stages of any development and dimensions, fittings, finishes, ongoing costs and specifications and representations are subject to change without notice.
The information contained in this material is a guide only and does not constitute an offer, inducement, representation, warranty or contract.
No part of it should be reproduced, adapted or communicated without the written consent of the copyright owner.



portoCruise
AL ALAMEIN

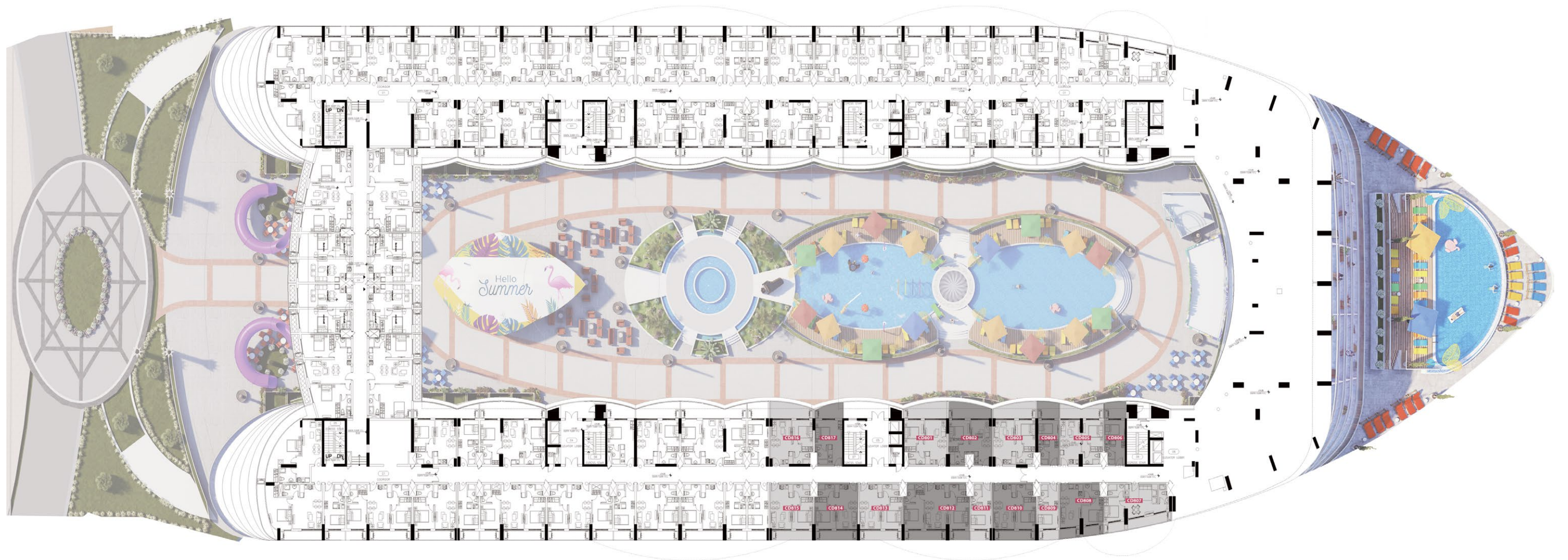
DISCLAIMER
The information contained in this promotional material is for illustration purposes only and is subject to change. Statements, figures, calculations, plans, images and representations are indicative only.
Changes may be made during the further planning or development stages of any development and dimensions, fittings, finishes, ongoing costs and specifications and representations are subject to change without notice.
The information contained in this material is a guide only and does not constitute an offer, inducement, representation, warranty or contract.
No part of it should be reproduced, adapted or communicated without the written consent of the copyright owner.



DISCLAIMER
The information contained in this promotional material is for illustration purposes only and is subject to change. Statements, figures, calculations, plans, images and representations are indicative only.
Images may include sketches, artist impressions and computer-generated images.
Changes may be made during the further planning or development stages of any development and dimensions, fittings, finishes, pricing costs and specifications and representations are subject to change without notice.
The information contained in this material is a guide only and does not constitute an offer, inducement, representation, warranty or contract.
No part of it should be reproduced, adapted or communicated without the written consent of the copyright owner.

Floor Plans

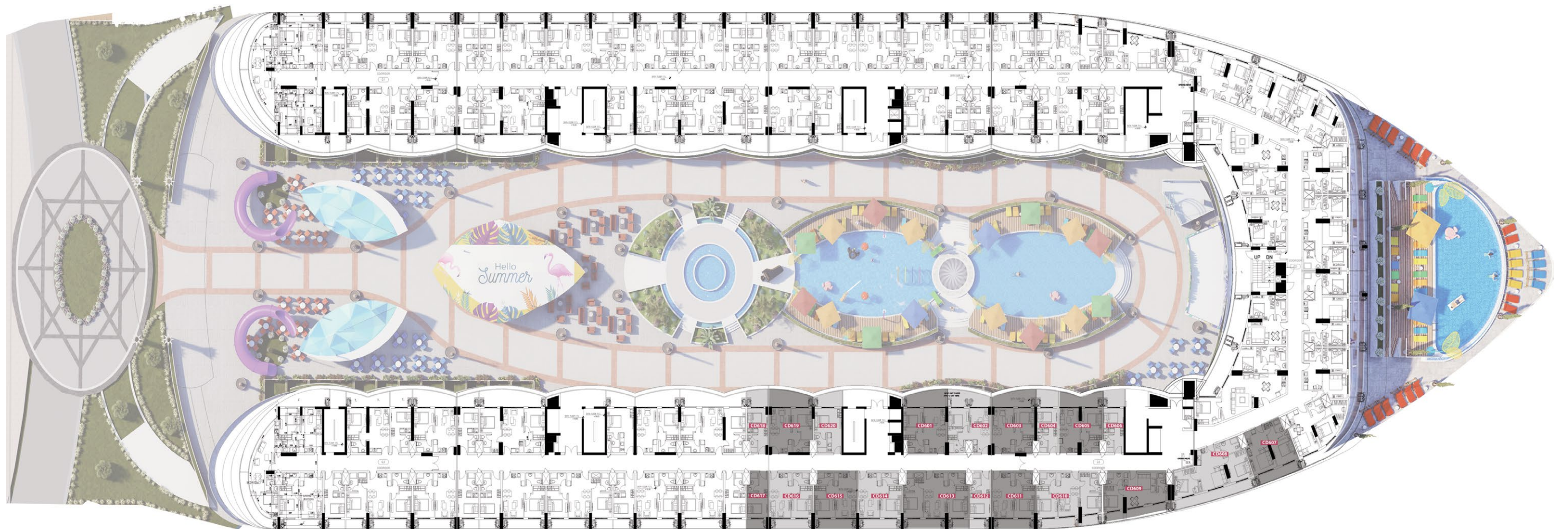
1ST FLOOR



2ND FLOOR



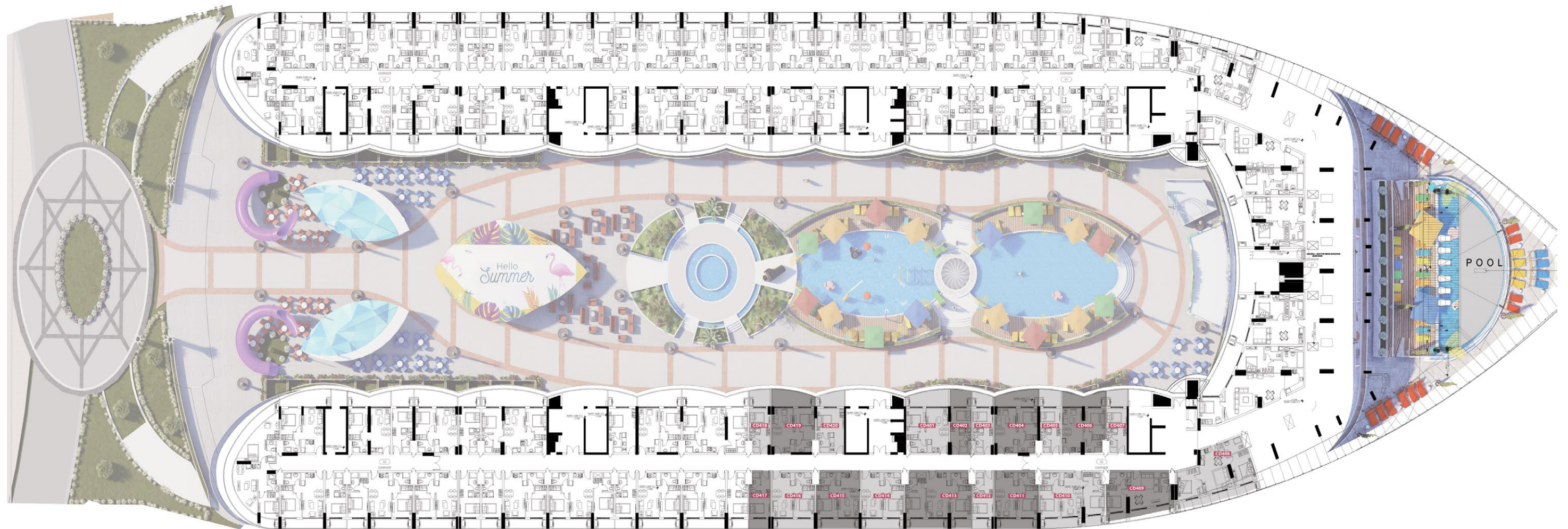
3RD FLOOR



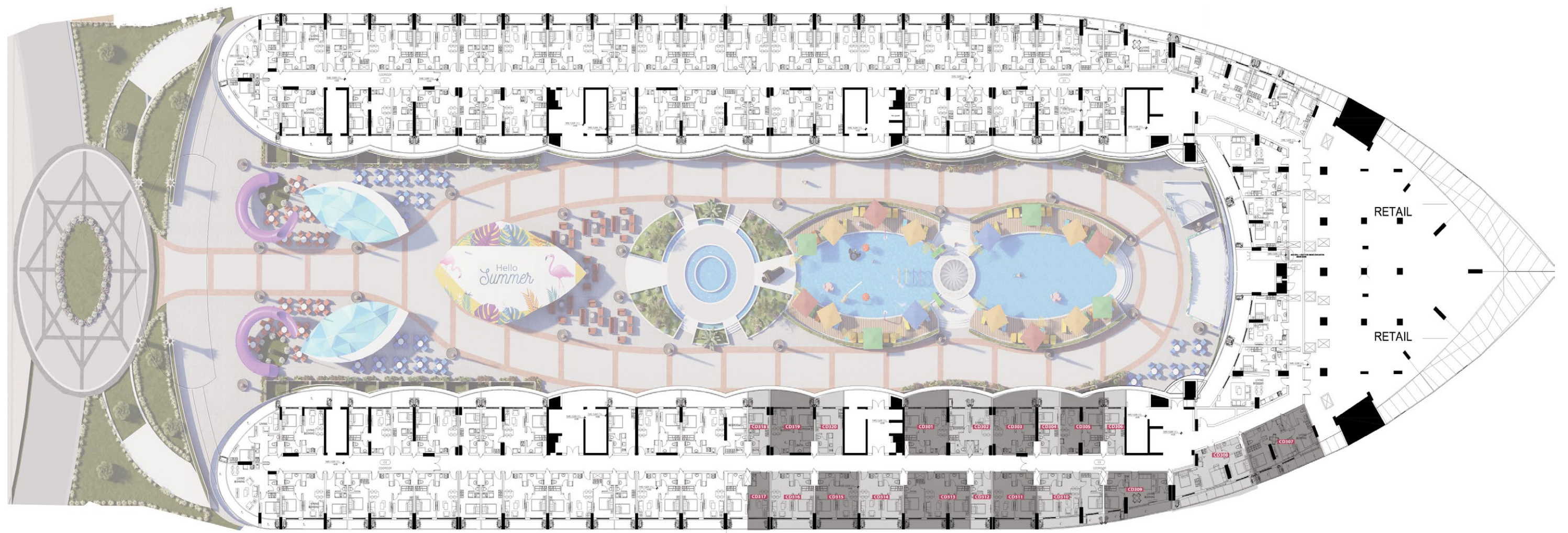
4TH FLOOR



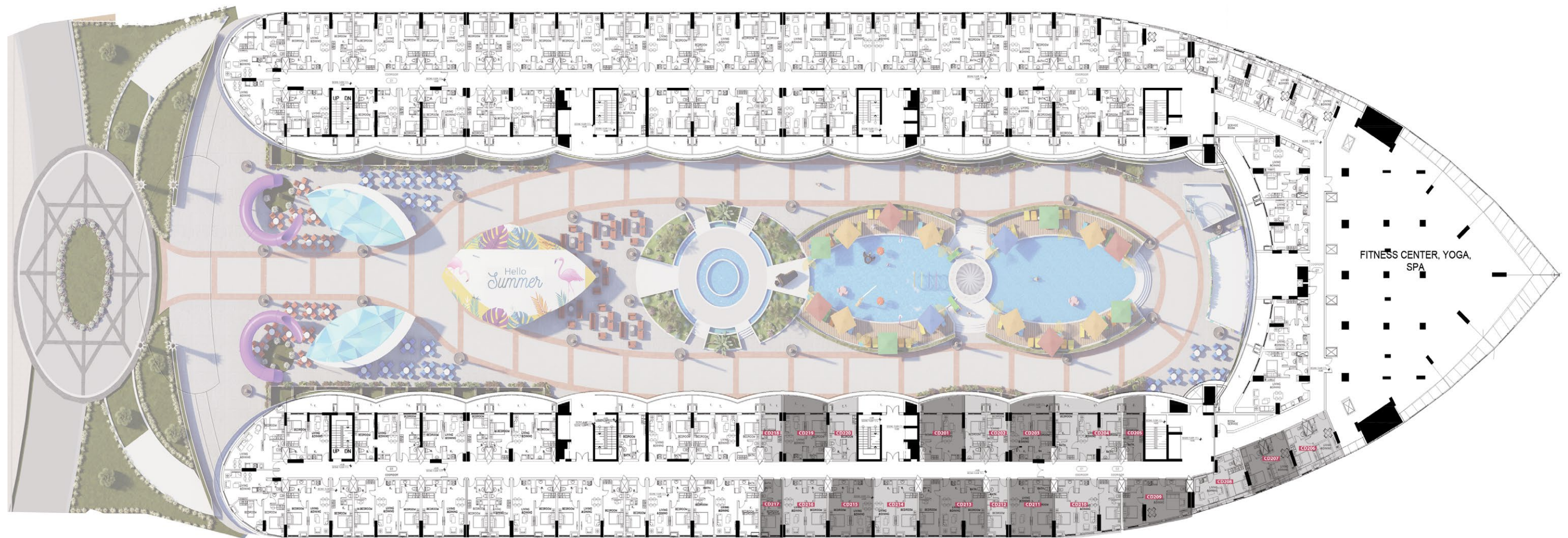
5TH FLOOR



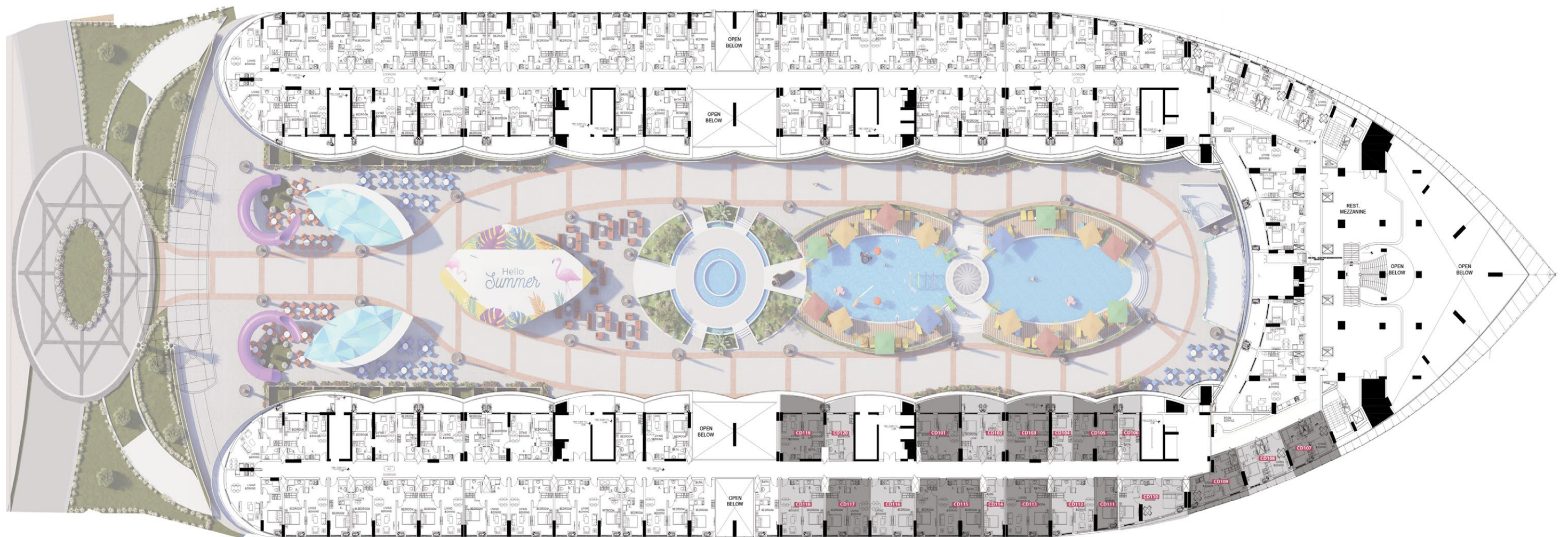
6TH FLOOR



7TH FLOOR



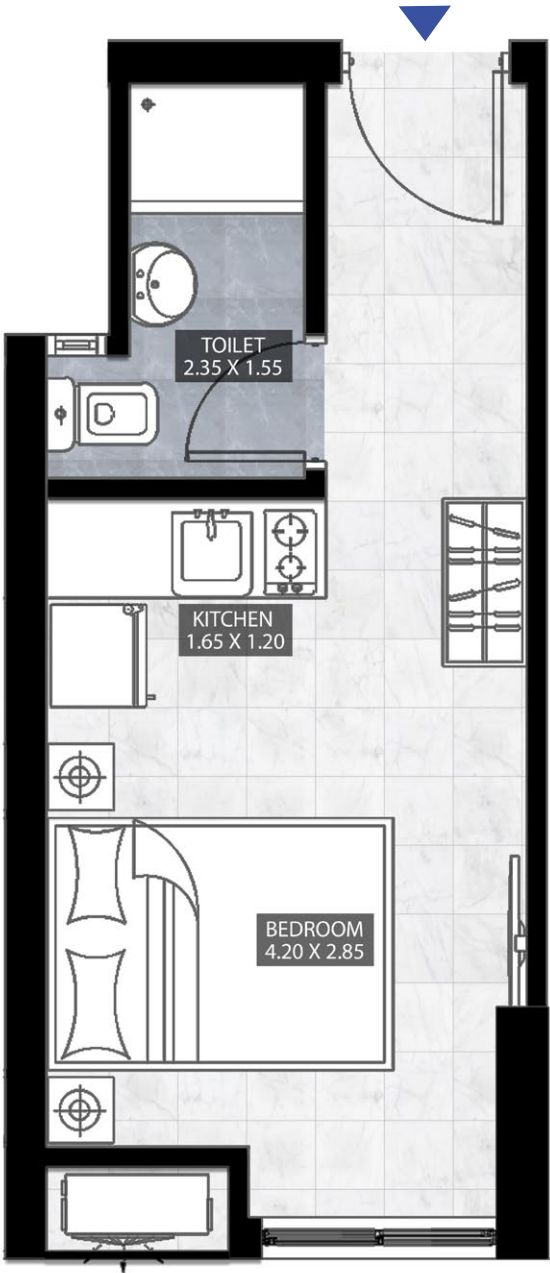
8TH FLOOR



Unit Plans

30 m2 WITHOUT TERRACE

STUDIO

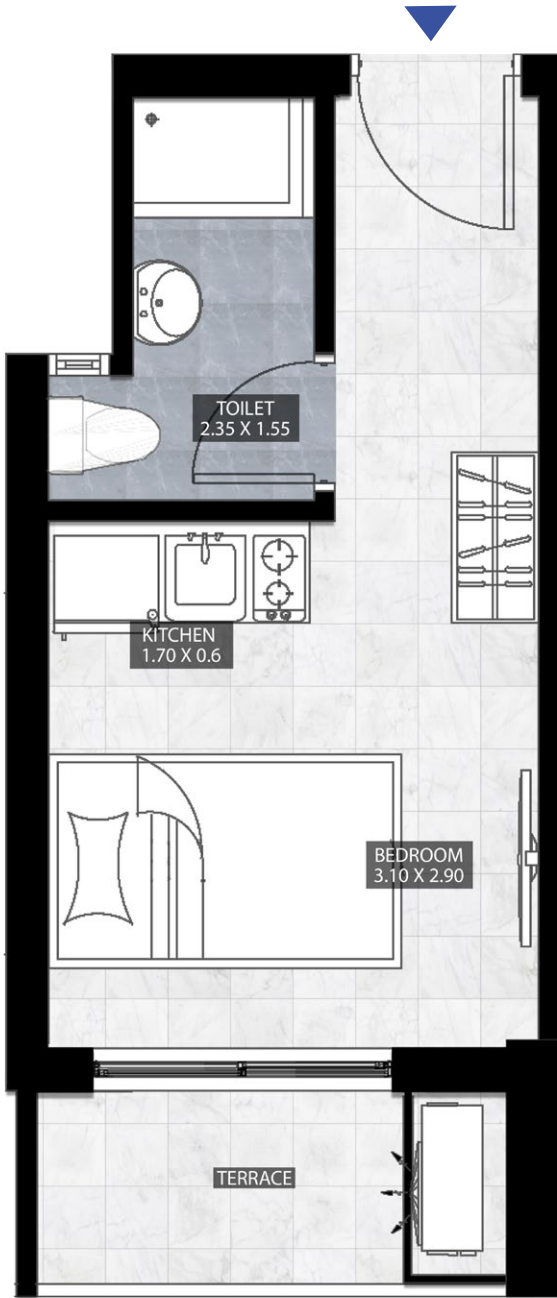


From 3rd Floor to 8th Floor

BEDROOM	4.20 x 2.85 m
KITCHEN	1.65 x 1.20 m
BATHROOM	2.35 x 1.55 m

30 m2 PANORAMIC VIEW WITH TERRACE

STUDIO

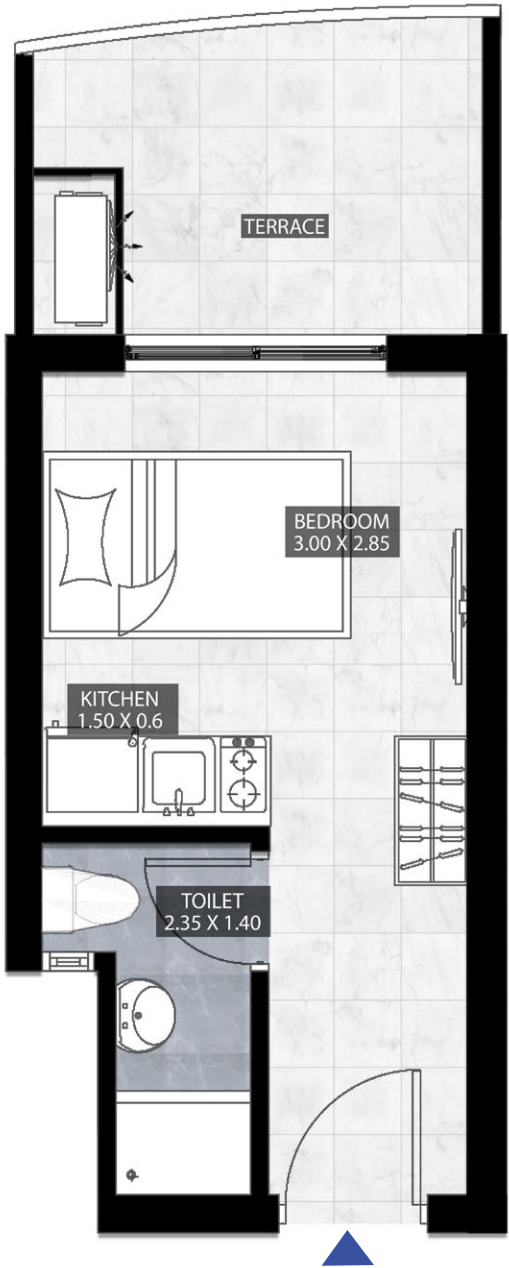


From 3rd Floor to 8th Floor

BEDROOM	3.10 x 2.90 m
KITCHEN	1.70 x 0.60 m
BATHROOM	2.35 x 1.55 m

35 m2 WITH TERRACE

STUDIO

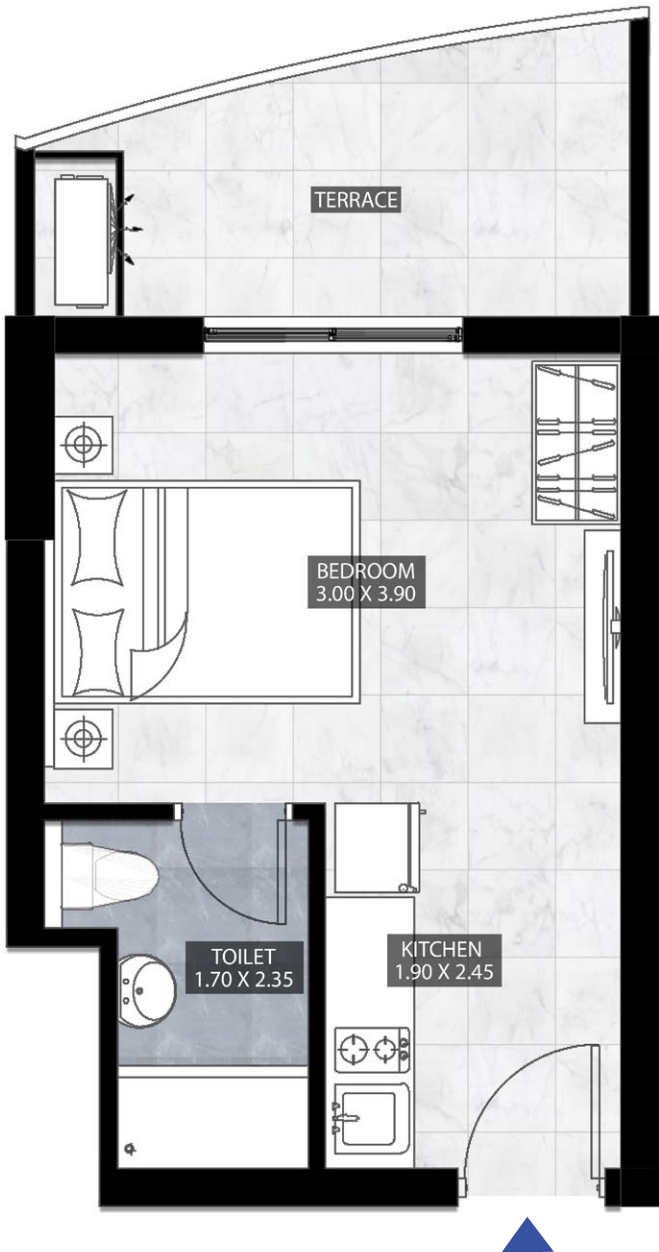


From 1st Floor to 8th Floor

BEDROOM	3.00 x 2.85 m
KITCHEN	1.50 x 0.60 m
BATHROOM	2.35 x 1.40 m

45 m2 WITH TERRACE

STUDIO

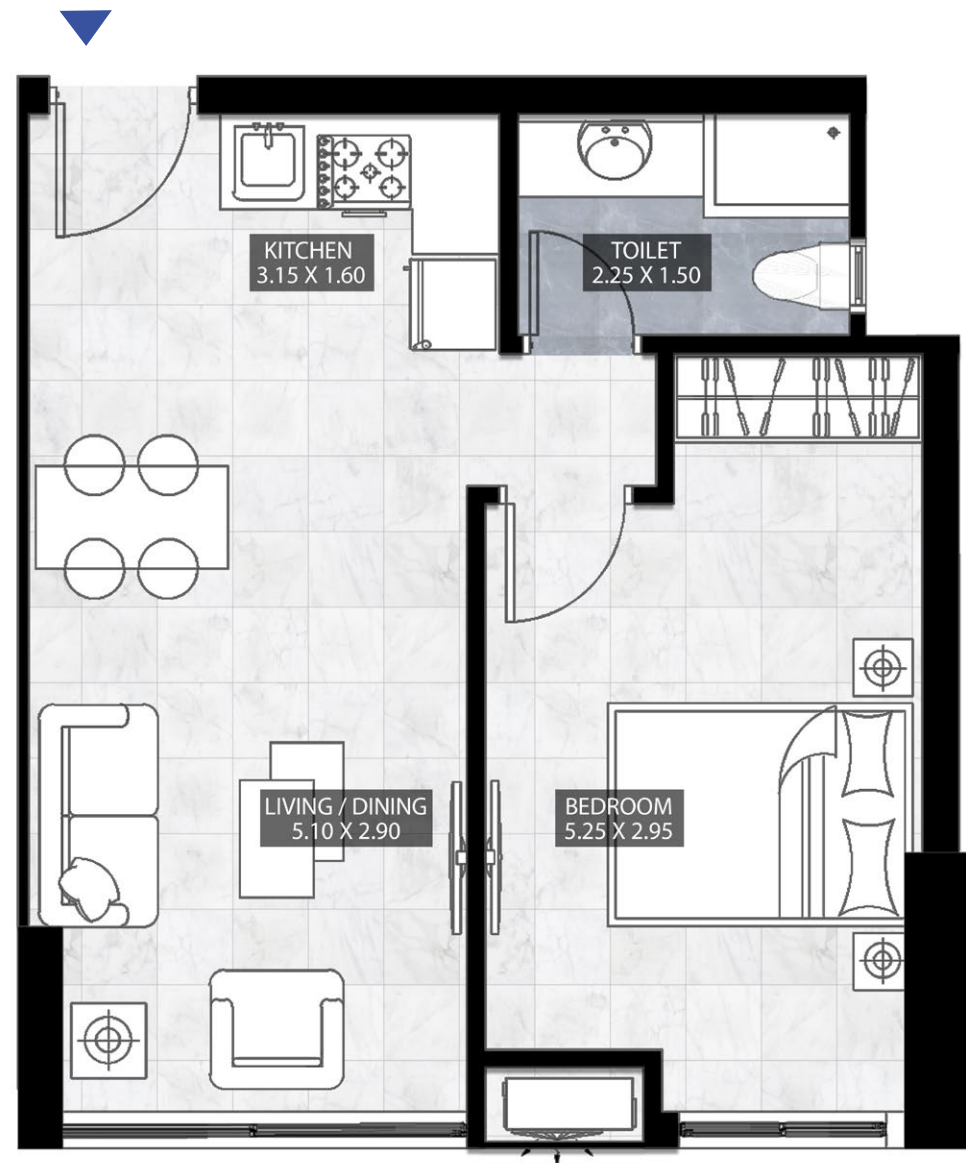


From 1st Floor to 8th Floor

BEDROOM	3.00 x 3.90 m
KITCHEN	1.90 x 2.45 m
BATHROOM	2.35 x 1.70 m

55 m2 PANORAMIC VIEW

1 BEDROOM

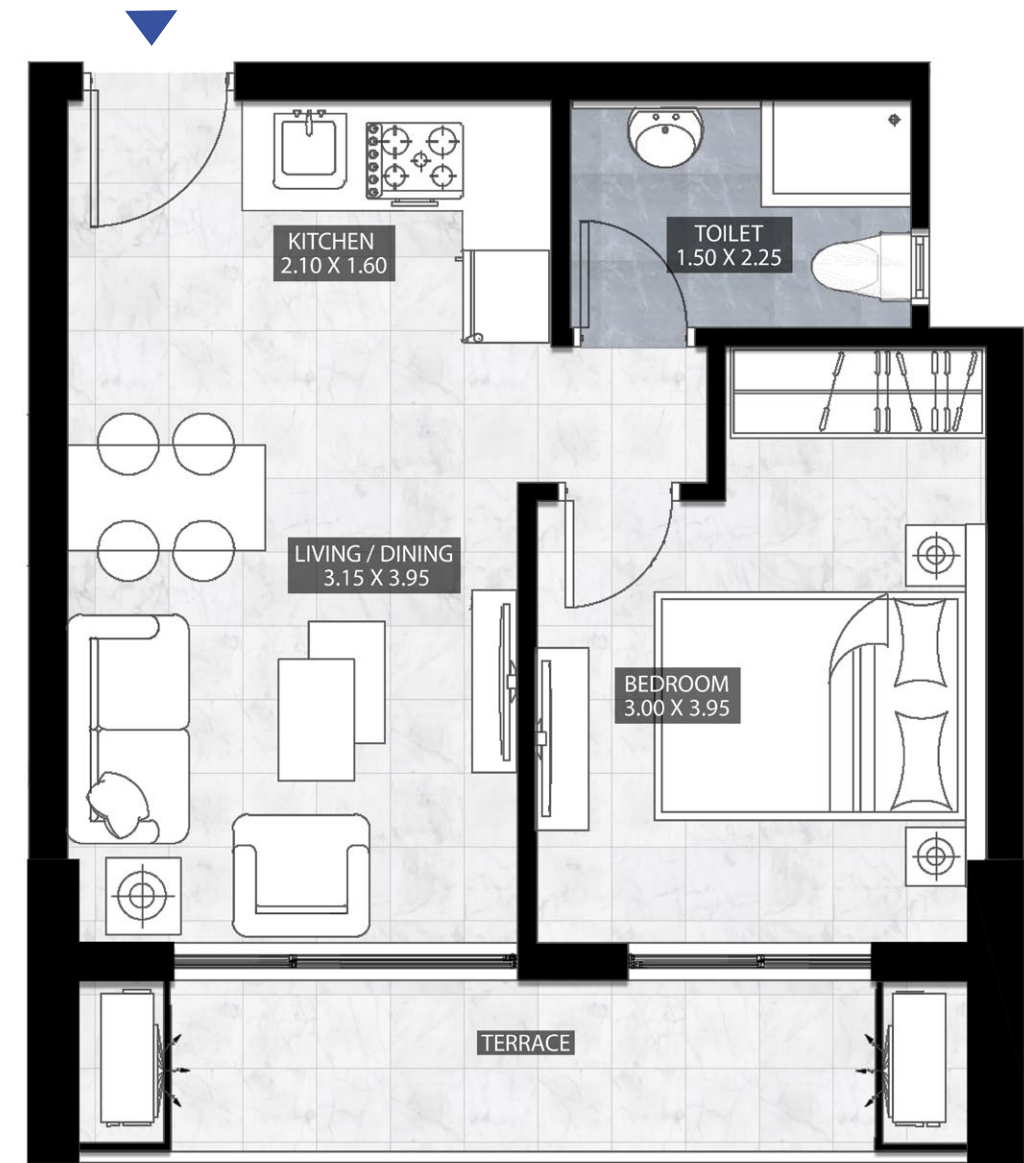


From 1st Floor to 8th Floor

BEDROOM	5.25 x 2.95 m
KITCHEN	3.15 x 1.60 m
BATHROOM	2.25 x 1.50 m
LIVING / DINNING	5.10 x 2.90 m

60 m2 PANORAMIC VIEW
WITH TERRACE

1 BEDROOM



From 1st Floor to 8th Floor

BEDROOM	3.00 x 3.95 m
KITCHEN	2.10 x 1.60 m
BATHROOM	2.25 x 1.50 m
LIVING / DINNING	3.15 x 3.95 m

67 m² POOL VIEW
WITH TERRACE

1 BEDROOM

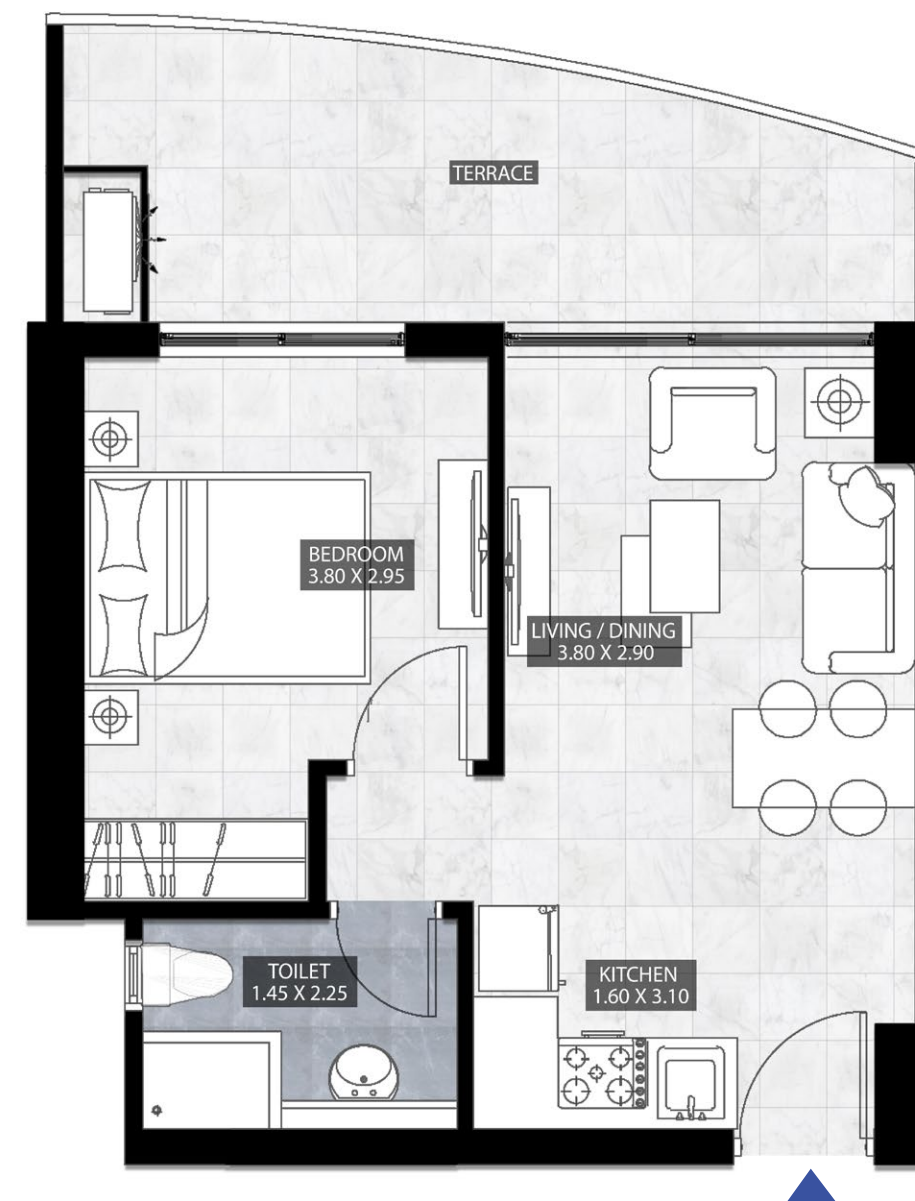


From 1st Floor to 8th Floor

BEDROOM	3.80 x 3.00 m
KITCHEN	2.20 x 1.60 m
BATHROOM	2.20 x 1.50 m
LIVING / DINNING	3.80 x 2.85 m

67 m² CENTRAL VIEW
WITH TERRACE

1 BEDROOM

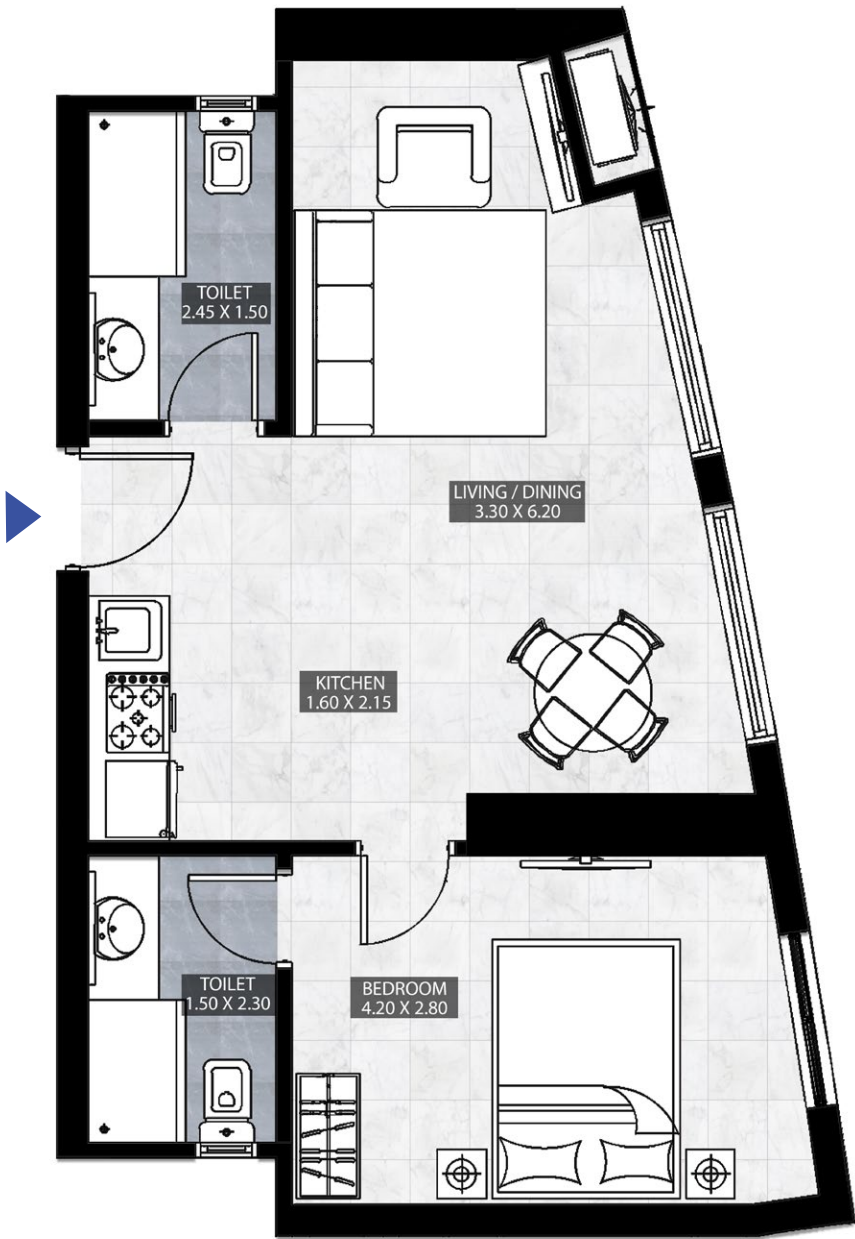


From 1st Floor to 8th Floor

BEDROOM	3.80 x 2.95 m
KITCHEN	3.10 x 1.60 m
BATHROOM	2.25 x 1.45 m
LIVING / DINNING	3.80 x 2.90 m

71 m2 PANORAMIC VIEW

1 BEDROOM

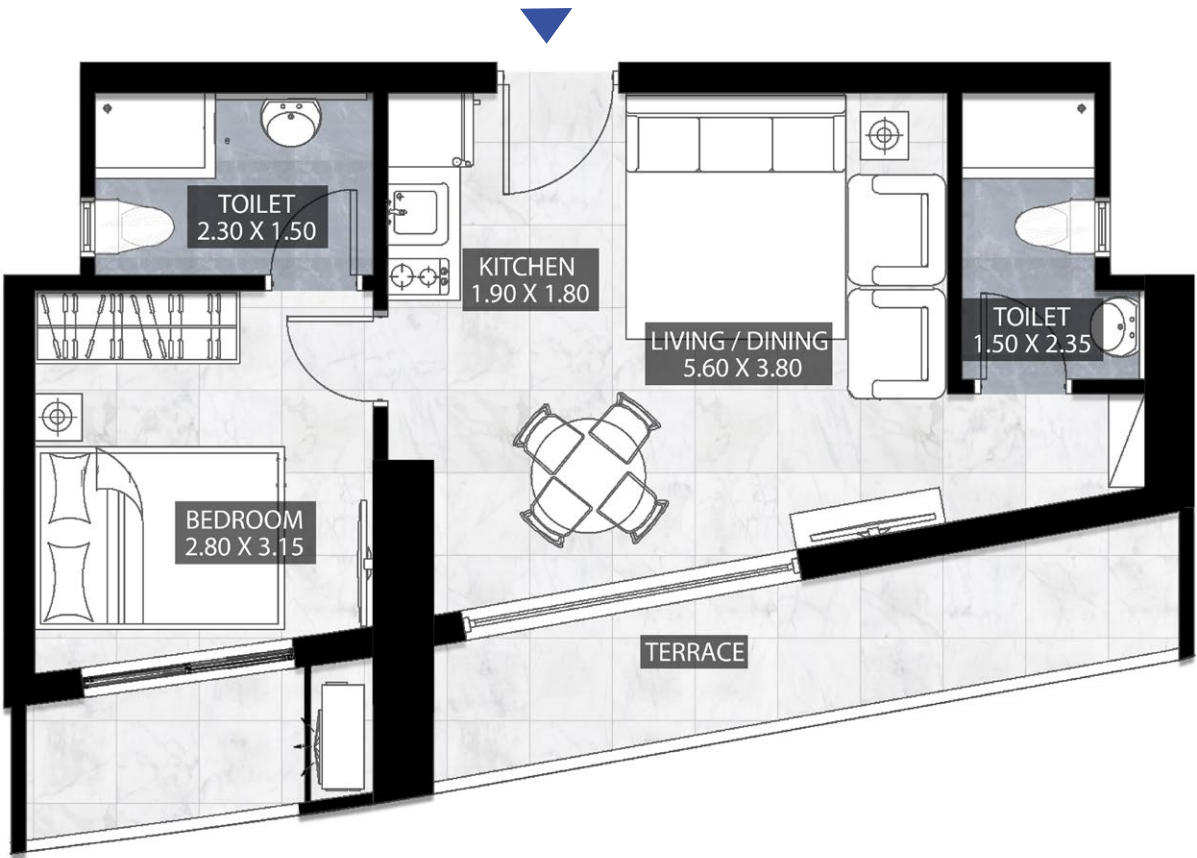


From 1st Floor to 8th Floor

M. BEDROOM	4.20 x 2.80 m
M. BATHROOM	2.50 x 1.50 m
KITCHEN	2.15 x 1.60 m
BATHROOM	2.45 x 1.50 m
LIVING / DINNING	3.30 x 6.20 m

75 m2 PANORAMIC VIEW

1 BEDROOM

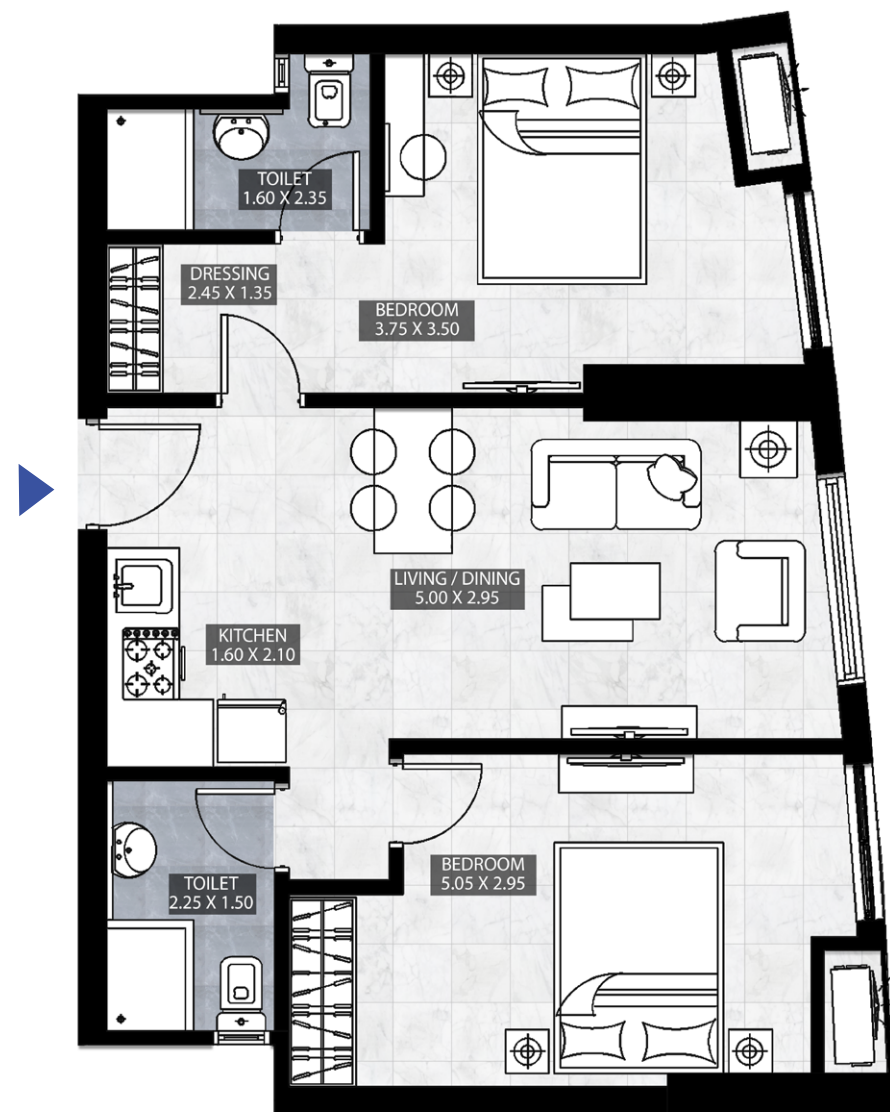


From 1st Floor to 8th Floor

M. BEDROOM	3.15 x 2.80 m
M. BATHROOM	2.30 x 1.50 m
KITCHEN	1.90 x 1.80 m
BATHROOM	2.35 x 1.50 m
LIVING / DINNING	3.80 x 5.60 m

84 m2 PANORAMIC VIEW

2 BEDROOM

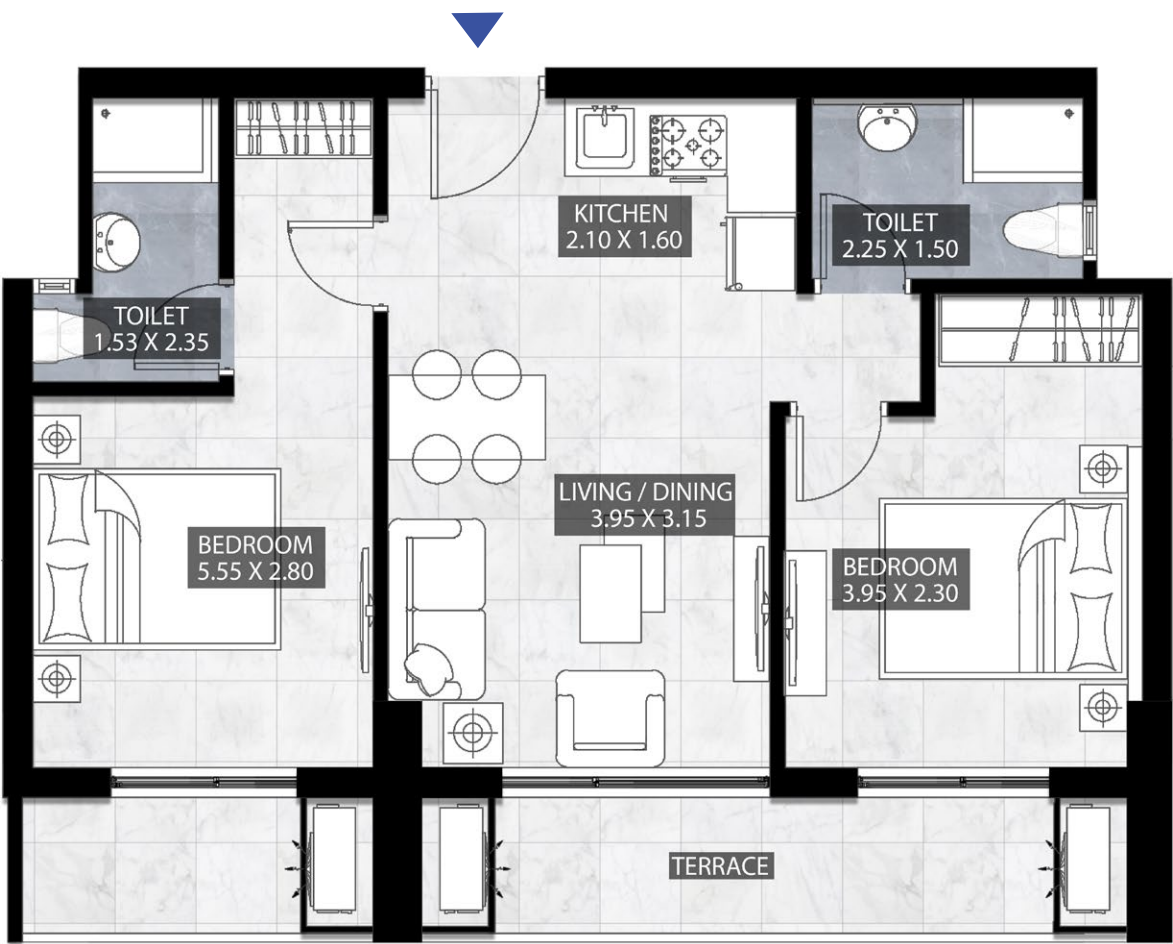


From 1st Floor to 8th Floor

M. BEDROOM	3.75 x 3.50 m
DRESSING	2.45 x 1.35 m
M. BATHROOM	2.35 x 1.60 m
KITCHEN	1.60 x 2.10 m
BATHROOM	2.25 x 1.50 m
LIVING / DINNING	2.95 x 5.00 m
BEDROOM	2.95 x 5.05 m

86 m2 PANORAMIC VIEW

2 BEDROOM



From 1st Floor to 8th Floor

M. BEDROOM	5.55 x 2.80 m
M. BATHROOM	2.35 x 1.53 m
KITCHEN	1.60 x 2.10 m
BATHROOM	2.25 x 1.50 m
LIVING / DINNING	3.95 x 3.15 m
BEDROOM	3.95 x 2.30 m

86 m² WITHOUT TERRACE

2 BEDROOM

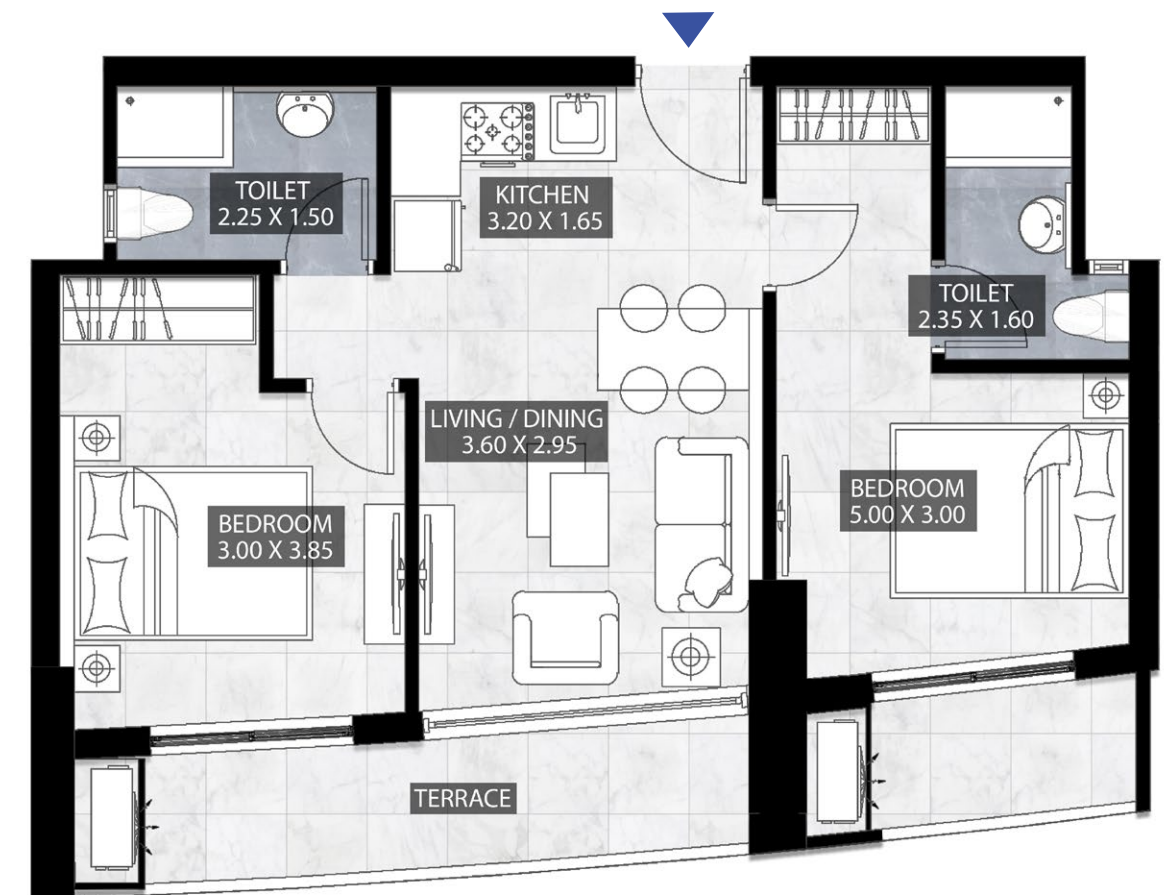


From 1st Floor to 8th Floor

M. BEDROOM	4.30 x 2.80 m
M. BATHROOM	2.35 x 1.60 m
KITCHEN	1.60 x 2.10 m
BATHROOM	2.25 x 1.50 m
LIVING / DINNING	4.25 x 3.15 m
BEDROOM	2.95 x 5.15 m

100 m² WITH TERRACE

2 BEDROOM

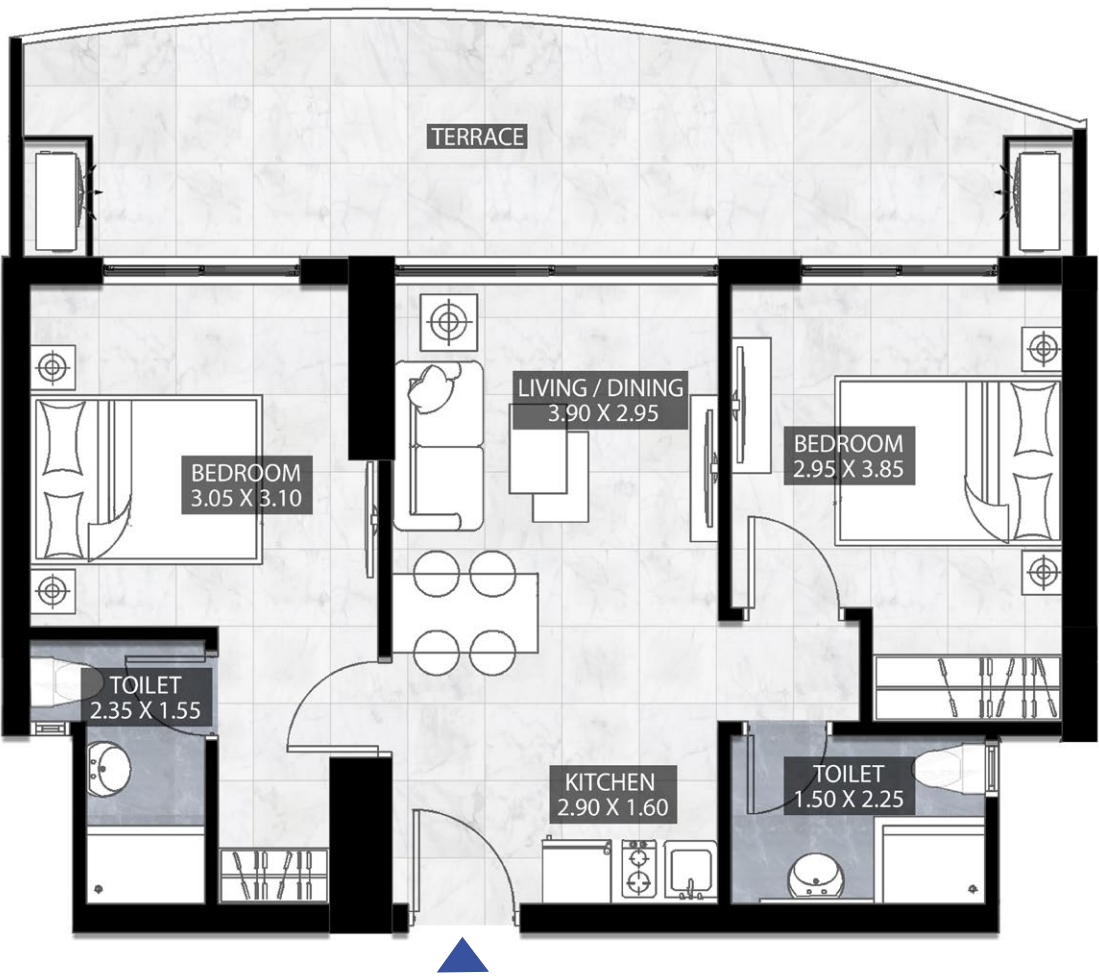


From 1st Floor to 8th Floor

M. BEDROOM	5.00 x 3.00 m
M. BATHROOM	2.35 x 1.50 m
KITCHEN	1.55 x 3.20 m
BATHROOM	2.25 x 1.50 m
LIVING / DINNING	3.60 x 2.95 m
BEDROOM	3.00 x 3.85 m

100 m2 WITH TERRACE

2 BEDROOM



From 1st Floor to 8th Floor

M. BEDROOM	3.10 x 3.05 m
M. BATHROOM	2.35 x 1.55 m
KITCHEN	2.90 x 1.60 m
BATHROOM	2.25 x 1.50 m
LIVING / DINNING	3.90 x 2.95 m
BEDROOM	2.95 x 3.85 m



