

waterfront™



صَوَافِ
NEW ALEXANDRIA

waterfront™



صَوَافِ

NEW ALEXANDRIA

waterfront™



صَوَافِ
NEW ALEXANDRIA

waterfront™



صَوَاكِبْ
NEW ALEXANDRIA

waterfront™



صَوَافِ
NEW ALEXANDRIA



waterfront

A HIGHER FORM OF REALITY

Life, Leisure and Everything in between

Waterfront, a visionary development by Seif Group, spans an impressive 120,000 m², setting a new standard for integrated living. The project features Four high-rise towers offering a variety of residential units, complemented by a ground-floor recreational area and a two-level podium housing an array of high-end retail outlets. Additionally, an expansive underground parking facility ensures convenience and ease for all residents and visitors.

Our mission is to redefine the essence of modern urban living by creating a fully integrated community that blends luxury with functionality. At Waterfront, we harmoniously combine the tranquility of a serene environment with the conveniences and vibrancy of city life. Driven by Seif Group's commitment to excellence, Waterfront is more than just a residential destination! It's a lifestyle that seamlessly balances recreation, comfort, and essential needs, making it the benchmark for contemporary living.



Residential

218,000 sqm



Retail

24,000 sqm



Parking

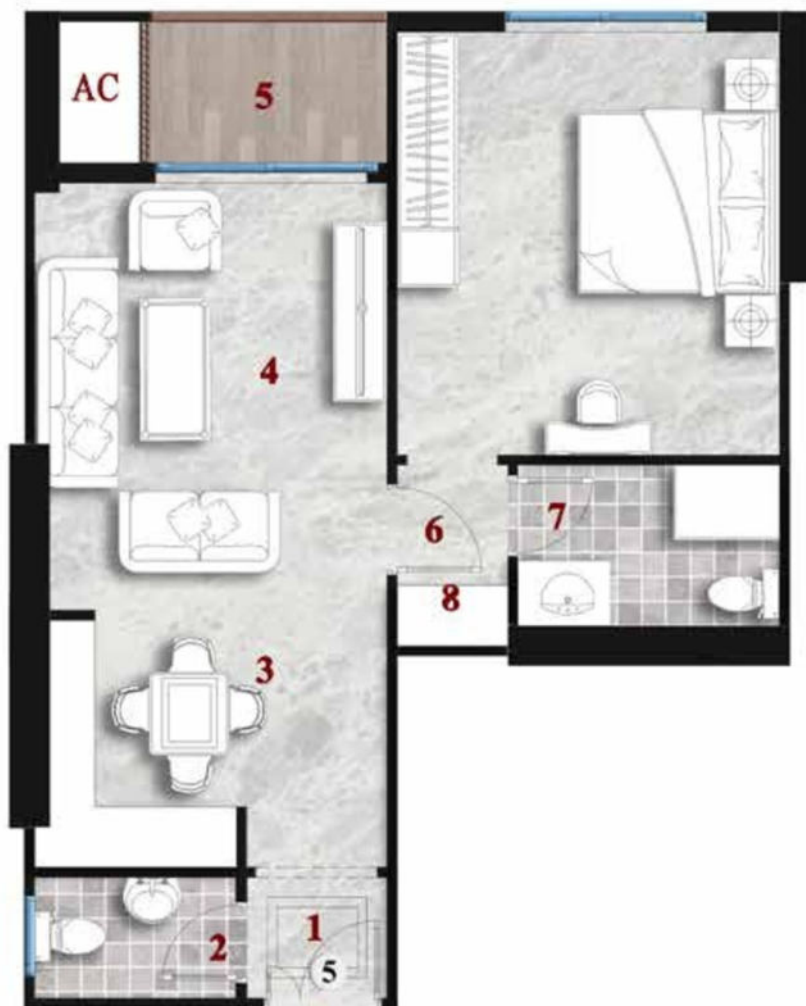
2,950 Slots



Landscape

50,000 sqm

FLAT (A-5) (4th to 18th Floor) 77 m²



1- Entrance hall	1.40X1.30
2- Toilet	1.30X2.10
3- Kitchenette	2.50X2.10
4- Reception	4.30X3.60
5- Terrace 1	2.40X1.50
6- Master Bedroom	4.30X3.90
7- Master Bathroom	2.70X1.70
8- Dressing room	1.20X0.80

Floor Key Plan

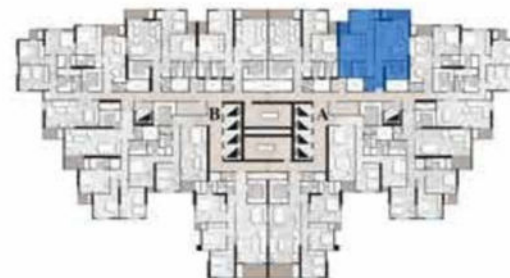


FLAT (A-6) (4th to 18th Floor) 142 m²



1- Entrance hall	4.10X1.40
2- Kitchen	3.20X2.80
3- Reception	6.00X5.10
4- Terrace 1	3.40X1.40
5- Bedroom 1	4.50X3.50
6- Terrace 2	1.80X1.30
7- Master Bedroom	4.00X3.90
8- Master Bathroom	2.40X2.00
9- Bathroom	2.40X2.00
10- Toilet	2.10X1.50

Floor Key Plan

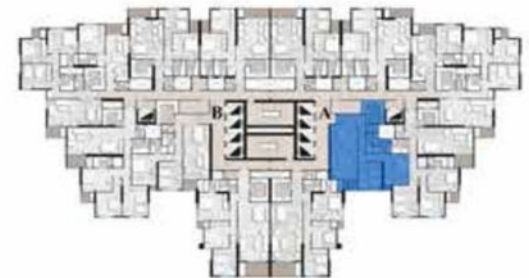


FLAT (A-2) (4th to 18th Floor) 147 m²



1- Entrance hall	4.50X1.50
2- Kitchen	3.50X3.40
3- Reception	8.20X4.00
4- Terrace 1	2.10X1.50
5- Bedroom 1	4.10X3.60
6- Terrace 2	1.10X0.80
7- Master Bedroom	4.70X3.70
8- Master Bathroom	2.20X1.80
9- Bathroom	2.00X1.90
10- Toilet	1.90X1.30

Floor Key Plan





FLAT (4) (5th to 16th Floor) 191 m²

1- Entrance hall	3.60X1.40
2- Kitchen	3.40X2.70
3- Reception	7.10X4.90
4- Terrace 1	3.70X1.80
5- Bedroom 1	3.90X3.80
6- Bedroom 2	4.10X3.40
7- Terrace 2	1.80X1.30
8- Master Bedroom	4.30X3.80
9- Dressing room	2.10X2.70
10- Master Bathroom	2.00X2.50
11- Bathroom	2.50X1.90
12- Living room	4.20X3.40
13- toilet	2.40X1.20

Floor Key Plan





FLAT (1) (5th to 16th Floor) 321 m²

1- Entrance hall	3.70X2.90
2- Toilet	2.30X2.00
3- Reception	11.10X5.30
4- Terrace 1	5.40X2.80
5- Bedroom 1	4.80X3.90
6- Terrace 2	1.70X1.60
7- Bedroom 2	4.80X4.00
8- Terrace 3	1.90X1.80
9- Master Bedroom	5.00X3.80
10- Dressing room	2.90X3.10
11- Master Bathroom	2.70X2.40
12- Bathroom	2.90X2.10
13- Living room	5.50X3.70
14- Maid's toilet	1.90X1.80
15- Maid's room	2.90X1.90
16- Kitchen	5.00X3.10

Floor Key Plan



waterfront™

CALL OUR
HOTLINE
15624